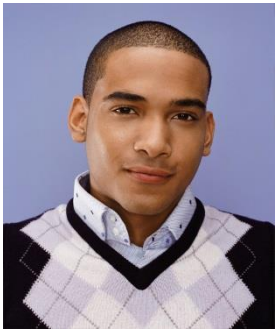


7.4 Human Genetics and Pedigrees

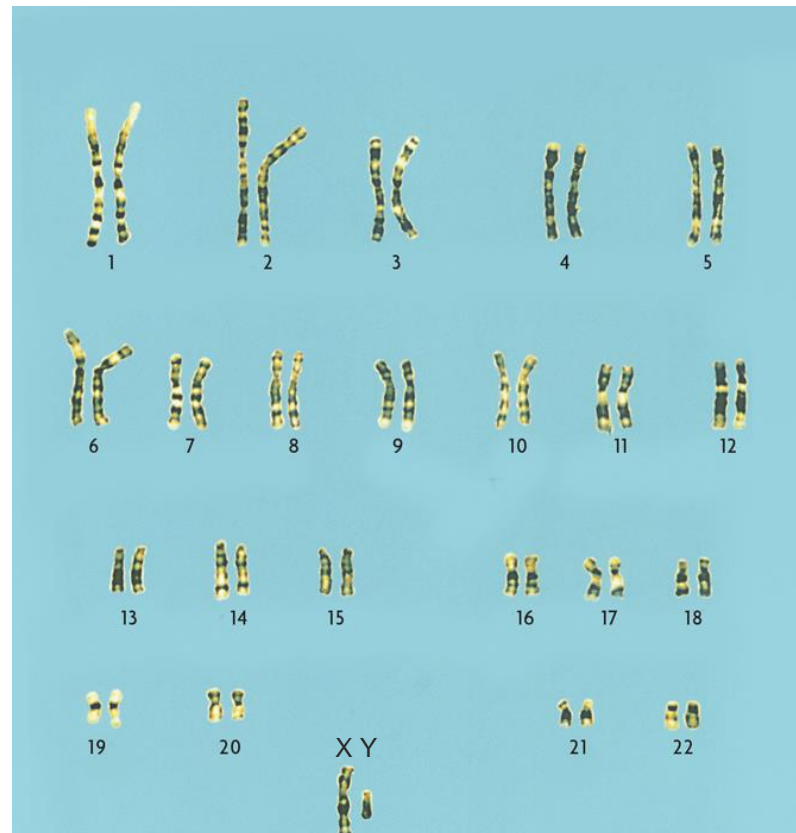
KEY CONCEPT

A combination of methods is used to study human genetics.



7.4 Human Genetics and Pedigrees

- ▶ **Several methods help map human chromosomes.**
 - A karyotype is a picture of all chromosomes in a cell.



7.4 Human Genetics and Pedigrees

- Karyotypes can show changes in chromosomes.
 - deletion of part of a chromosome or loss of a chromosome
 - large changes in chromosomes
 - extra chromosomes or duplication of part of a chromosome

